

ALLIED VAUGHN TEMPLATE

V510 - Custom VHS Bottomload Sleeve

Helpful Hints

- Raster images, both grayscale and 4-color process, should be scanned/saved at 300 dpi, at 100% of desired final print size.
- Raster art files containing both text and grayscale or 4-color images should be created/saved at 600 dpi, at 100% of desired output size.
- Raster artwork containing just text and/or line-art should be created/saved at 1200 dpi, at 100% of desired final print size.
- If possible, convert type to outlines or paths in a vector program.
- Files that should separate as spot color(s) should not be rasterized or flattened.

Graphic File Formats Supported

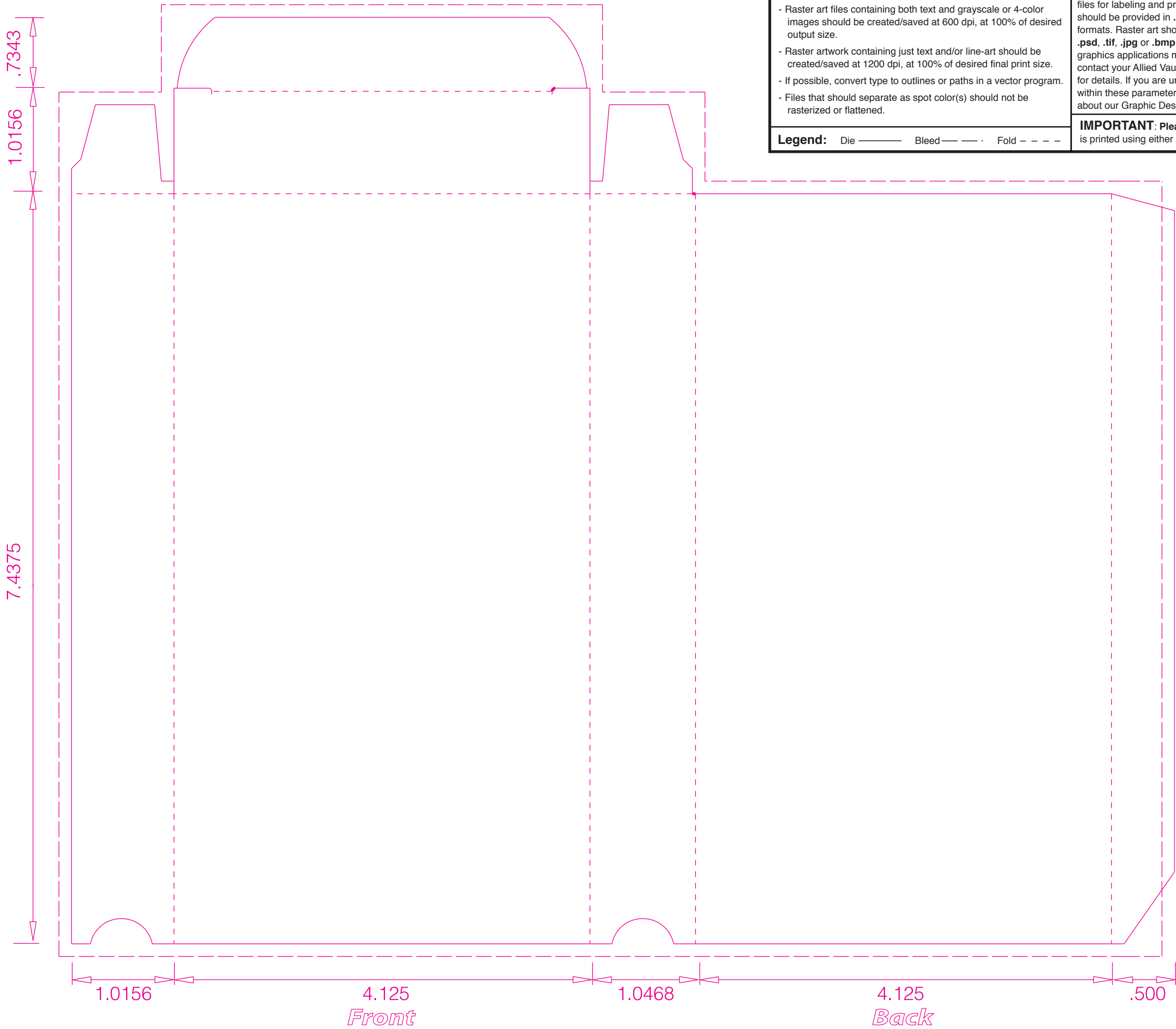
Allied Vaughn prefers **Adobe** graphics applications for creating and providing art files for labeling and pre-press. Vector art should be provided in **.ai**, or **.eps** file formats. Raster art should be provided in **.psd**, **.tif**, **.jpg** or **.bmp**. Other formats and graphics applications may be supported, contact your Allied Vaughn Representative for details. If you are unable to provide art within these parameters, please inquire about our Graphic Design Services.

CheckList

- Template on a separate layer
- Raster images are placed at 100%
- Images are CMYK or Spot (see below)
- Spot (Pantone) colors clearly indicated
- Artwork has sufficient bleed (1/8" min.)
- All printer & screen fonts included with file(s)
- All images included with file(s)
- Laser or color output included
- Spell check & proof read

Legend: Die ——— Bleed — — · Fold - - - -

IMPORTANT: Please do not supply film. Most paper and paperboard packaging is printed using either Direct To Plate (DTP) or some other Digital Imaging Process.



7.4375

1.0156

1.0156

4.125

1.0156

4.125
Front

1.0468

4.125
Back

.500